

Labour Market Information

Coventry & Warwickshire
October 2020

Parent & student guide



What is LMI ?



Labour Market Information (LMI) is a useful tool to help research future jobs in the local area, understand the skills needed for certain roles and the demand for future employment.

LMI helps to break down the complex 'world of work' – ranging from descriptions of different careers, their entry routes, promotional prospects, salaries paid, skills and qualifications needed, etc. Crucially for young people, LMI also covers future demand – what kinds of jobs will be in demand after leaving school and what kinds of skills will be needed.

Why is LMI important to Young People?

The world of working is changing rapidly. New technology and industry changes create some new jobs and also make others obsolete. Alongside the ongoing Covid-19 pandemic changing the way jobs are carried out and having a huge impact on the job market, it can be hard to keep up.

LMI helps to break down the complex 'world of work' – ranging from descriptions of different careers, their entry routes, promotional prospects, salaries paid, skills and qualifications needed, etc. Crucially for young people, LMI also covers future demand – what kinds of jobs will be in demand after leaving school and what kinds of skills will be needed.

How can LMI help young people decide what to do next?

Having up to date, high quality information can help students decide things about their future such as:

- Are there opportunities close to where I live in the sector I am interested in or will I need to relocate?
- How competitive is the industry I am interested in? Are there enough jobs and do I need to have a back up plan?
- Does the pay for the job I want align to what I would like to earn?
- What is the best route for me to take to get to the job I would like?
- Is the industry I would like to work in growing or shrinking?

Coventry



Jobs by sector:

Business, professional and financial



23%

Public Sector including Education



18%

Retail



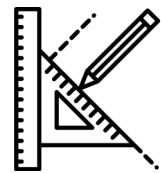
15%

Life Sciences & Healthcare



13%

Advanced Manufacturing & Engineering



11%

Jobs titles include:

Project Manager
Accountant
Mortgage Advisor
Cyber Security Specialist

Teacher
Equality & inclusion officer
Member of parliament
Civil Servant

Visual Merchandiser
Store Manager
Sales Assistant
Customer Technical Manager

NHS Scientist
Lab Technician
Nurse
Psychologist

Production Manager
Games Designer
Civil Engineer
Battery Technology Specialist

Trends in the sectors globally and locally:

Use of new technology such as Artificial Intelligence & Machine Learning.

Increased use of digital technology in teaching/education.

Advances in technology will allow retailers to enhance products and services.

Aging society, increased technology & widespread focus on mental health.

3D printing, Automation & Digitisation, Electrification of travel

What to consider at school?

ICT
Maths
Sciences

ICT
Maths
Sciences
Teaching-related subjects

ICT
Sciences
Soft Skills Leadership/Communication

Sciences
Health/care courses
Psychology
Soft skills

D&T
Physics
Maths
ICT

Rugby



Jobs by sector:

Business, professional and financial



23%

Retail



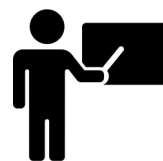
15%

Logistics and Transport Technologies



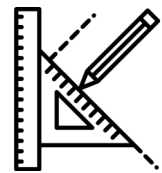
12%

Public Sector including Education



12%

Advanced Manufacturing & Engineering



9%

Jobs titles include:

Project Manager
Accountant
Mortgage Advisor
Cyber Security Specialist

Visual Merchandiser
Store Manager
Sales Assistant
Customer Technical Manager

Supply Manager
Commercial Driver
Warehouse Manager
Robotics Software Engineer

Teacher
Equality & inclusion officer
Member of parliament
Civil Servant

Production Manager
Games Designer
Civil Engineer
Battery Technology Specialist

Trends in the sectors globally and locally:

Use of new technology such as Artificial Intelligence & Machine Learning.

Advances in technology will allow retailers to enhance products and services.

Connected and Autonomous Vehicles

Increased use of digital technology in teaching/education.

3D printing, Automation & Digitisation, Electrification of travel

What to consider at school?

ICT
Maths
Sciences

ICT
Sciences
Soft Skills Leadership/
Communication

ICT
Sciences
Maths
Technical Pathways

ICT
Maths
Sciences
Teaching-related subjects

D&T
Physics
Maths
ICT

Stratford-on-Avon



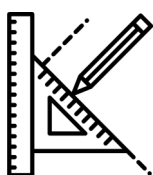
Jobs by sector:

Business, professional and financial



21%

Advanced Manufacturing & Engineering



20%

Retail



15%

Cultural Economy including Sports



11%

Life Sciences & Healthcare



11%

Jobs titles include:

Project Manager
Accountant
Mortgage Advisor
Cyber Security Specialist

Production Manager
Games Designer
Civil Engineer
Battery Technology Specialist

Visual Merchandiser
Store Manager
Sales Assistant
Customer Technical Manager

Restaurant Manager
Social Media Executive
Operations Supervisor
Sports Coach

NHS Scientist
Lab Technician
Nurse
Psychologist

Trends in the sectors globally and locally:

Use of new technology such as Artificial Intelligence & Machine Learning.

3D printing, Automation & Digitisation, Electrification of travel

Advances in technology will allow retailers to enhance products and services.

Sustainability focus, a need for seamless technology

Aging society, increased technology & widespread focus on mental health.

What to consider at school?

ICT
Maths
Sciences

D&T
Physics
Maths
ICT

ICT
Sciences
Soft Skills Leadership/
Communication

ICT
Maths
Soft Skills
Communication

Sciences
Health/care courses
Psychology
Soft skills

Jobs by sector:

Business, professional and financial



25%

Retail



15%

Life Sciences & Healthcare



12%

Public Sector including Education



10%



8%

Jobs titles include:

Project Manager
Accountant
Mortgage Advisor
Cyber Security Specialist

Visual Merchandiser
Store Manager
Sales Assistant
Customer Technical Manager

NHS Scientist
Lab Technician
Nurse
Psychologist

Teacher
Equality & inclusion officer
Member of parliament
Civil Servant

Restaurant Manager
Social Media Executive
Operations Supervisor
Sports Coach

Trends in the sectors globally and locally:

Use of new technology such as Artificial Intelligence & Machine Learning.

Advances in technology will allow retailers to enhance products and services.

Aging society, increased technology & widespread focus on mental health.

Increased use of digital technology in teaching/education.

Sustainability focus, a need for seamless technology

What to consider at school?

ICT
Maths
Sciences

ICT
Sciences
Soft Skills Leadership/
Communication

Sciences
Health/care courses
Psychology
Soft skills

ICT
Maths
Sciences
Teaching-related subjects

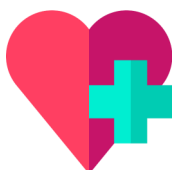
ICT
Maths
Soft Skills
Communication

Nuneaton & Bedworth



Jobs by sector:

Life Sciences &
Healthcare



17%

Retail



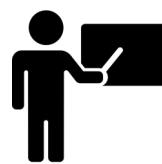
17%

Business, professional
and financial



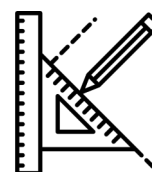
17%

Public Sector including
Education



14%

Advanced Manufacturing
& Engineering



12%

Jobs titles include:

NHS Scientist
Lab Technician
Nurse
Psychologist

Visual Merchandiser
Store Manager
Sales Assistant
Customer Technical
Manager

Project Manager
Accountant
Mortgage Advisor
Cyber Security
Specialist

Teacher
Equality & inclusion
officer
Member of parliament
Civil Servant

Production Manager
Games Designer
Civil Engineer
Battery Technology
Specialist

Trends in the sectors globally and locally:

Aging society,
increased technology
& widespread focus on
mental health.

Advances in technology
will allow retailers to
enhance products and
services.

Use of new technology
such as Artificial
Intelligence & Machine
Learning.

Increased use of digital
technology in
teaching/education.

3D printing,
Automation &
Digitisation,
Electrification of travel

What to consider at school?

Sciences
Health/care courses
Psychology
Soft skills

ICT
Sciences
Soft Skills Leadership/
Communication

ICT
Maths
Sciences

ICT
Maths
Sciences
Teaching-related subjects

D&T
Physics
Maths
ICT

North Warwickshire



Jobs by sector:

Retail



20%

Business, professional
and financial



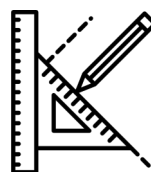
17%

Logistics and Transport
Technologies



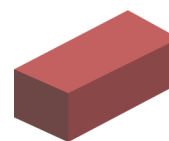
17%

Advanced Manufacturing
& Engineering



15%

Construction



8%

Jobs titles include:

Visual Merchandiser
Store Manager
Sales Assistant
Customer Technical
Manager

Project Manager
Accountant
Mortgage Advisor
Cyber Security
Specialist

Supply Manager
Commercial Driver
Warehouse Manager
Robotics Software
Engineer

Production Manager
Games Designer
Civil Engineer
Battery Technology
Specialist

Site Manager
Quantity Surveyor
Research Engineer
Electrician

Trends in the sectors globally and locally:

Advances in technology
will allow retailers to
enhance products and
services.

Use of new technology
such as Artificial
Intelligence & Machine
Learning.

Connected and
Autonomous Vehicles

3D printing,
Automation &
Digitisation,
Electrification of travel

Zero/Low Carbon
buildings

What to consider at school?

ICT
Sciences
Soft Skills Leadership/
Communication

ICT
Maths
Sciences

ICT
Sciences
Maths
Technical Pathways

D&T
Physics
Maths
ICT

D&T
Physics
Maths
ICT

Where can I find out more?



We hope you have found the information in this guide useful, for further and detailed LMI please follow the below links:

<https://www.prospects.ac.uk>—a career website aimed at recent graduates.

<https://www.lmiforall.org.uk>—a comprehensive portal which collates LMI.

<https://icould.com/> - a website aimed at young people, using personal stories to inform career choices and each video is linked to relevant LMI.

<https://nationalcareers.service.gov.uk/explore-careers>—shows a variety of career profiles, under each there is information about salaries, working hours and typical duties.

<https://www.gov.uk/government/publications/uk-labour-market-projections-2014-to-2024>—

UK Labour market predictions



cwcareershubs.co.uk



@CWCareersHub



linkedin.com/in/cwcareershubs



cwcareers@cwlep.com



GrowthHub



Coventry & Warwickshire
Local Enterprise Partnership